



FIREWARE

CREATING REALISTIC TRAINING ENVIRONMENTS



Creating realistic training environments

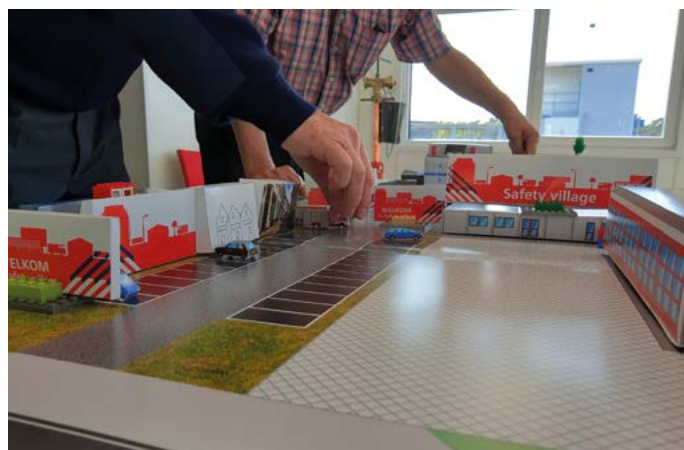
Creating realistic training environments

19 years of experience in creating training centres

Experience is everything

FireWare creates realistic training environments, both temporary ones as well as complete training centres. They are all ultra-realistic, recognisable, and interactive, allowing these environments to help the emergency services both gain skills and maintain them.

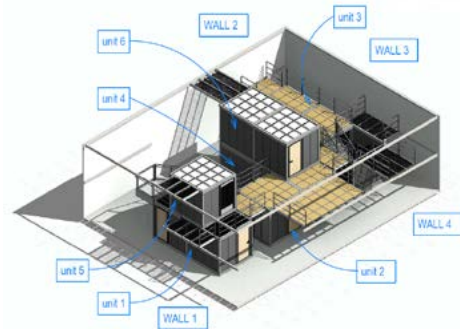
Training centres are highly complex environments that serve a very wide array of interests. That is something we have learnt over the last 19 years, and it is why we believe that co-creation is the keyword. Inspirational partnerships with people from different organisations and disciplines but with one common goal – to create a perfect training environment within the specified frameworks!



Creating training centres

FireWare adds value to teams involved in creating training centres, using a variety of approaches:

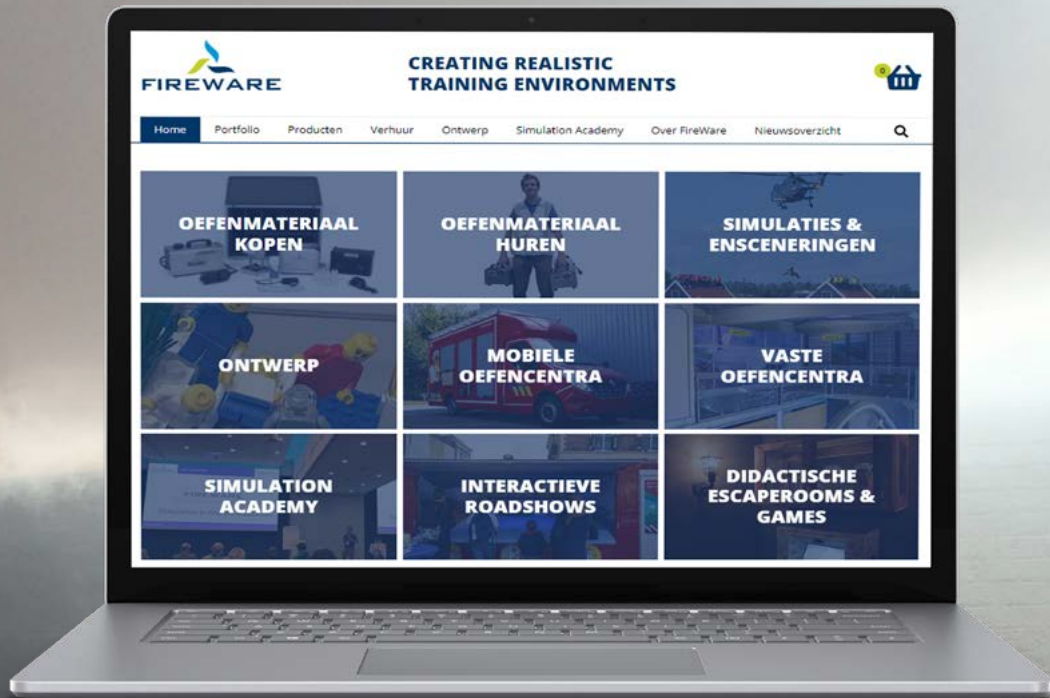
- we have various tried-and-tested methods for gaining an understanding of the learning and teaching objectives, and not just those of today but of the future too;
- FireWare has much experience in making the leap from learning and teaching objectives to the object of the exercise;
- we understand the difference between becoming skilled and staying skilled, and what the consequences of that are for building a training centre;
- FireWare has its roots in the theatrical world, which means we understand how important experience is and we have the expertise to ensure it plays a role in achieving the learning and teaching objectives;
- over the years we have found numerous ways for preventing object fatigue – the phenomenon that regularly-returning participants are no longer challenged as they are too familiar with the facilities;
- using our creativity, we are able to develop training facilities that can be used at different levels, from command through to operational target groups;
- FireWare can find the right balance between proven and traditional training concepts and new approaches.



Adding value together

A perfect training environment is not created alone. FireWare loves the group dynamic of multidisciplinary teams working together on a single goal – an ultra-realistic training environment! While the client and the users are naturally a part of these multidisciplinary teams, we cannot forget the range of specialists either, such as mechanical engineers, construction engineers and furnace manufacturers. FireWare adds value to these teams by continuously monitoring the relationship between the training objectives and the training environment and works together with all disciplines. A realistic training environment is created together!

- Realistic training equipment -
- Public awareness roadshows -
 - Training facility design -
- On-site incident simulation team -
 - Gamification & interactives -
- Staging & special effect courses -



Visit www.FireWare.nl for even more inspirational simulations and free access to the Simulation Academy!



CREATING REALISTIC TRAINING ENVIRONMENTS

 [LinkedIn.com/company/FireWare-BV](https://www.linkedin.com/company/FireWare-BV)

 [Instagram.com/FireWare_nl](https://www.instagram.com/FireWare_nl)


 [Facebook.com/FireWareBV](https://www.facebook.com/FireWareBV)


 [Twitter.com/FireWarebv](https://www.twitter.com/FireWarebv)

 [Youtube.com/FireWare](https://www.youtube.com/FireWare)

 [Vimeo.com/FireWare](https://www.vimeo.com/FireWare)

 www.FireWare.nl

 +31(0) 88 252 6000

 FireWare
De Stek 5
1771 SP Wieringerwerf
The Netherlands